


Primary 4 - Term 4 Science (Nanyang)

 Duplicate

 Print

 Delete

 Assign Test

Test Introduction

[+ Add Introduction](#)

49 Questions (65 Points)

Question Bank: 19,950 Questions 

Test Questions

1 Test Assignment

Question 1

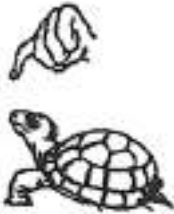
Primary 4 Science » Primary 4 Science (Term 4)

2 pts

Booklet A (28 x 2 marks)

For each question from 1 to 28, four options are given. One of them is the correct answer.

A tortoise hides itself in its shell when touched.



This shows that the tortoise is a living thing because it can _____.

- A) grow
- B) breathe
- C) respond
- D) reproduce

Question Type: Multiple Choice
Randomize Answers: No
Date Added: Fri 15th Jan 2021
Last Modified: N/A
QID#: 25,888,780

 Answers |  Edit |  Duplicate |  Used In |  Reorder

[Remove From Test](#)

Question 2

Primary 4 Science » Primary 4 Science (Term 4)

2 pts

Which one of the following statements is true for ALL insects?

- A) They have tails
- B) They have a pair of wings
- ✓ C) They have three body parts
- D) They have a soft outer covering

Question Type: Multiple Choice
Randomize Answers: No
Date Added: Fri 15th Jan 2021
Last Modified: N/A
QID#: 25,889,049

[Answers](#) | [Edit](#) | [Duplicate](#) | [Used In](#) | [Reorder](#)

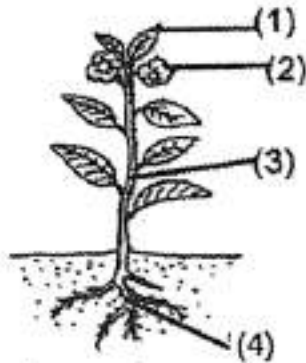
[Remove From Test](#)

Question 3

Primary 4 Science » Primary 4 Science (Term 4)

2 pts

The diagram shows a plant.
Which part, (1), (2), (3) or (4), is the root?



- A) 1
- B) 2
- C) 3
- ✓ D) 4

Question Type: Multiple Choice
Randomize Answers: No
Date Added: Fri 15th Jan 2021
Last Modified: N/A
QID#: 25,889,059

[Answers](#) | [Edit](#) | [Duplicate](#) | [Used In](#) | [Reorder](#)

[Remove From Test](#)

Question 4

Primary 4 Science » Primary 4 Science (Term 4)

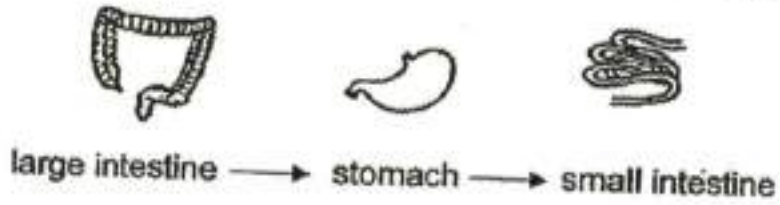
2 pts

Which one of the following shows the correct order when food moves through some parts of the digestive system?

A)



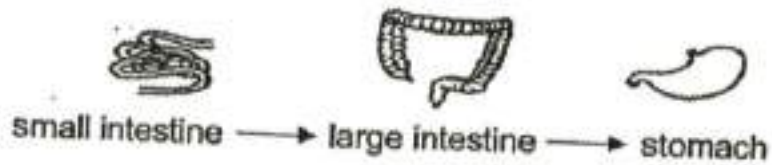
B)



✓ C)



D)



Question Type: Multiple Choice
 Randomize Answers: No
 Date Added: Fri 15th Jan 2021
 Last Modified: N/A
 QID#: 25,889,073

[Answers](#) | [Edit](#) | [Duplicate](#) | [Used In](#) | [Reorder](#)

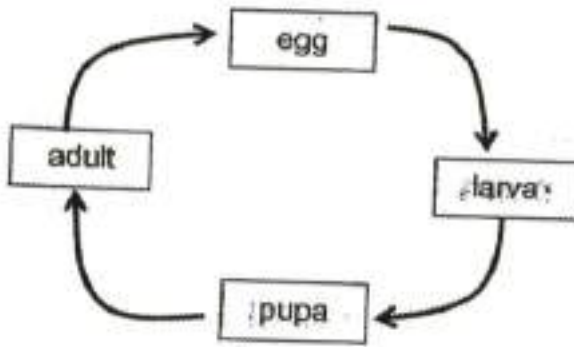
[Remove From Test](#)

Question 5

Primary 4 Science » Primary 4 Science (Term 4)

2 pts

The diagram below shows the life cycle of an animal.



Which animal is likely to have the life cycle as shown above?

- A) chicken
- ✓ B) butterfly
- C) cockroach
- D) grasshopper

Question Type: Multiple Choice
Randomize Answers: No
Date Added: Fri 15th Jan 2021
Last Modified: N/A
QID#: 25,890,001

[Answers](#) | [Edit](#) | [Duplicate](#) | [Used In](#) | [Reorder](#)

[Remove From Test](#)

Question 6

Primary 4 Science » Primary 4 Science (Term 4)

2 pts

Which one of the following objects can be attracted by a magnet?

- ✓ A) Iron ball
- B) Plastic ball
- C) Rubber ball
- D) Wooden ball

Question Type: Multiple Choice
Randomize Answers: No
Date Added: Fri 15th Jan 2021
Last Modified: N/A
QID#: 25,890,008

[Answers](#) | [Edit](#) | [Duplicate](#) | [Used In](#) | [Reorder](#)

[Remove From Test](#)

Question 7

Primary 4 Science » Primary 4 Science (Term 4)

2 pts

Which one of the following objects can be bent easily without breaking?

A)

A sheet of glass

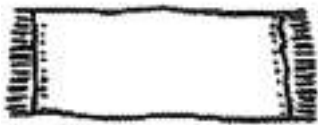


B)

A metal spoon

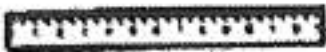
✓ C)

A towel



D)

A wooden ruler



Question Type: Multiple Choice
Randomize Answers: No
Date Added: Fri 15th Jan 2021
Last Modified: N/A
QID#: 25,890,016

[Answers](#) | [Edit](#) | [Duplicate](#) | [Used In](#) | [Reorder](#)

[Remove From Test](#)

Question 8

Primary 4 Science » Primary 4 Science (Term 4)

2 pts

Which one of the following is a source of light?

A)



an apple

B)



the moon

✓ C)



a lit candle

D)



a leaf

Question Type: Multiple Choice
Randomize Answers: No
Date Added: Fri 15th Jan 2021
Last Modified: N/A
QID#: 25,890,028

[Answers](#) | [Edit](#) | [Duplicate](#) | [Used In](#) | [Reorder](#)

[Remove From Test](#)

Question 9

Primary 4 Science » Primary 4 Science (Term 4)

2 pts

Which one of the following is a source of heat?

- A) a metal ring
- ✓ B) a lighted bulb
- C) a woollen cap
- D) a cotton sock

Question Type: Multiple Choice
Randomize Answers: No
Date Added: Fri 15th Jan 2021

Last Modified: N/A
QID#: 25,890,032

[Answers](#) | [Edit](#) | [Duplicate](#) | [Used In](#) | [Reorder](#)

[Remove From Test](#)

Question 10

Primary 4 Science » Primary 4 Science (Term 4)

2 pts

Which one of the following substances has a definite shape?

- A) air
- B) oil
- ✓ C) stone
- D) water

Question Type: Multiple Choice
Randomize Answers: No
Date Added: Fri 15th Jan 2021
Last Modified: N/A
QID#: 25,890,036

[Answers](#) | [Edit](#) | [Duplicate](#) | [Used In](#) | [Reorder](#)

[Remove From Test](#)

Question 11

Primary 4 Science » Primary 4 Science (Term 4)

2 pts

Ganesh classified some things as shown in the table below.

Living things	Non-living things
rabbit	pen
bicycle	shirt
apple tree	water bottle

His teacher identified that the **bicycle** has been wrongly classified

Which of the following statements about living things correctly explained why Ganesh was wrong?

- A) All living things can grow.
 - B) All living things can reproduce.
 - C) All living things need air, food and water to survive.
 - D) All living things can move from one place to another.
- A) A and D only
 - ✓ B) A, B and C only
 - C) B, C and D only
 - D) A, B, C and D

Question Type: Multiple Choice
Randomize Answers: No
Date Added: Fri 15th Jan 2021
Last Modified: N/A
QID#: 25,890,045

[Answers](#) | [Edit](#) | [Duplicate](#) | [Used In](#) | [Reorder](#)

[Remove From Test](#)

Question 12

Primary 4 Science » Primary 4 Science (Term 4)

2 pts

Which one of the following statements about plants are correct?

- A: All plants have roots
 B: All plants have stems
 C: All plants have leaves
 D: All plants reproduce by seeds

- A) C and D only
 ✓ B) A, B and C only
 C) A, B and D only
 D) A, B, C and D

Question Type: Multiple Choice
Randomize Answers: No
Date Added: Fri 15th Jan 2021
Last Modified: N/A
QID#: 25,890,056

[Answers](#) | [Edit](#) | [Duplicate](#) | [Used In](#) | [Reorder](#)

[Remove From Test](#)

Question 13

Primary 4 Science » Primary 4 Science (Term 4)

2 pts

Study the table below.

A tick (✓) shows that the animal has the characteristic.

Characteristic	Animals		
	P	Q	R
Has scales			✓
Has feathers		✓	
Has moist skin	✓		
Reproduce by laying eggs	✓	✓	✓

Which of the following correctly represent animals P, Q and R?

	Animal P	Animal Q	Animal R
(1)	owl	goldfish	salamander
(2)	toad	owl	goldfish
(3)	goldfish	crocodile	toad
(4)	salamander	toad	crocodile

- A) 1
 ✓ B) 2
 C) 3
 D) 4

Question Type: Multiple Choice
Randomize Answers: No
Date Added: Fri 15th Jan 2021
Last Modified: N/A

QID#:

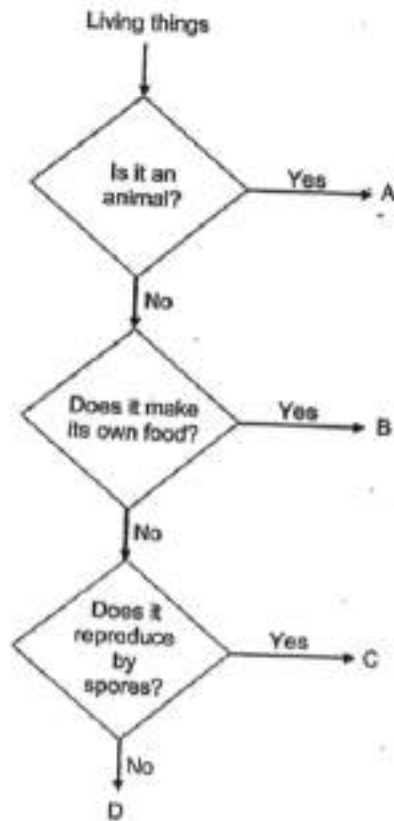
25,890,060

[Answers](#) | [Edit](#) | [Duplicate](#) | [Used In](#) | [Reorder](#)
[Remove From Test](#)**Question 14**

Primary 4 Science » Primary 4 Science (Term 4)

2 pts

Study the flowchart below.



Based on the flowchart above, which one of the following correctly represents the mushroom and bird's nest fern?

	mushroom	bird's nest fern
(1)	A	B
(2)	B	D
(3)	C	A
(4)	C	B

- A) 1
 B) 2
 C) 3
 ✓ D) 4

Question Type: Multiple Choice

Randomize Answers: No

Date Added: Fri 15th Jan 2021

Last Modified: N/A

QID#: 25,890,065

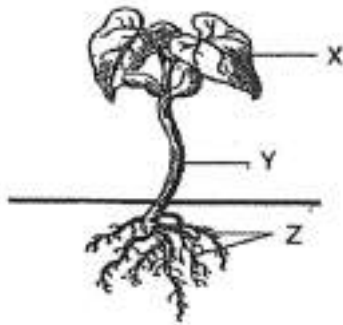
[Answers](#) | [Edit](#) | [Duplicate](#) | [Used In](#) | [Reorder](#)
[Remove From Test](#)

Question 15

Primary 4 Science » Primary 4 Science (Term 4)

2 pts

The diagram below shows a plant.



Which of the following represents the functions of parts X, Y and Z?

	X	Y	Z
(1)	produces flowers	holds the plant upright	makes food for the plant
(2)	holds the plant upright	produces flowers	absorbs water and mineral salts
(3)	makes food for the plant	holds the plant upright	absorbs water and mineral salts
(4)	makes food for the plant	absorbs water and mineral salts	produces flowers

- A) 1
 B) 2
 ✓ C) 3
 D) 4

Question Type: Multiple Choice
 Randomize Answers: No
 Date Added: Fri 15th Jan 2021
 Last Modified: N/A
 QID#: 25,890,069

[Answers](#) | [Edit](#) | [Duplicate](#) | [Used In](#) | [Reorder](#)

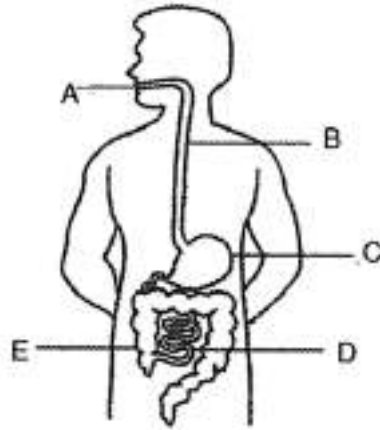
[Remove From Test](#)

Question 16

Primary 4 Science » Primary 4 Science (Term 4)

2 pts

The diagram below shows the human digestive system.



At which parts do digestion take place?

- A) A, B and C only
- ✓ B) A, C and D only
- C) B, D and E only
- D) C, D and E only

Question Type: Multiple Choice
Randomize Answers: No
Date Added: Fri 15th Jan 2021
Last Modified: N/A
QID#: 25,890,106

[Answers](#) | [Edit](#) | [Duplicate](#) | [Used In](#) | [Reorder](#)

[Remove From Test](#)

Question 17

Primary 4 Science » Primary 4 Science (Term 4)

2 pts

Wei Jie made the following statements about the human organ system.

- A: The digestive system breaks down food into simpler substances
- B: The skeletal system and the muscular system enable movement
- C: The circulatory system carries digested food in the blood to all parts of the body

Which of the statements above are correct?

- A) A and B only
- B) A and C only
- C) C and B only
- ✓ D) A, B and C

Question Type: Multiple Choice
Randomize Answers: No
Date Added: Fri 15th Jan 2021
Last Modified: N/A
QID#: 25,890,117

[Answers](#) | [Edit](#) | [Duplicate](#) | [Used In](#) | [Reorder](#)

[Remove From Test](#)

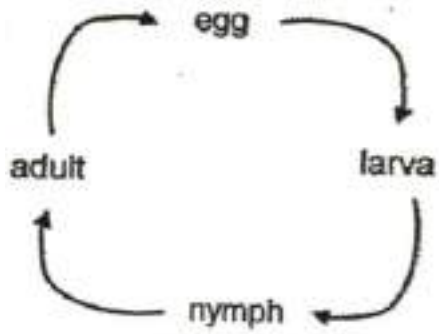
Question 18

Primary 4 Science » Primary 4 Science (Term 4)

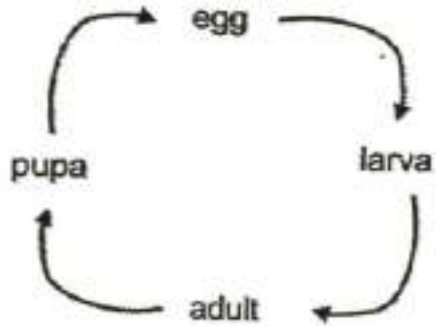
2 pts

The beetle has four stages in its life cycle. Which one of the following life cycle diagrams correctly shows the life cycle of a beetle?

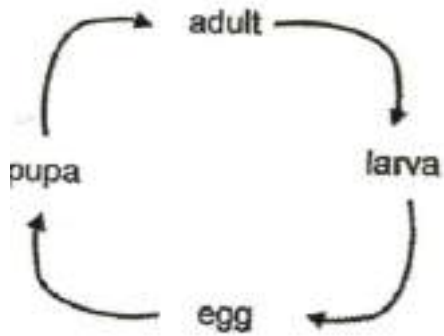
A)



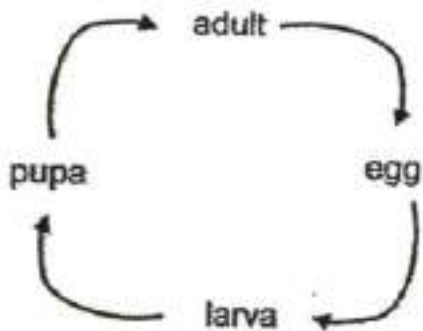
B)



C)



✓ D)



Question Type: Multiple Choice
Randomize Answers: No
Date Added: Fri 15th Jan 2021
Last Modified: N/A
QID#: 25,890,122

[Answers](#) | [Edit](#) | [Duplicate](#) | [Used In](#) | [Reorder](#)

[Remove From Test](#)

Question 19

Primary 4 Science » Primary 4 Science (Term 4)

2 pts

Lucas observed animals X and Y over a period of time and recorded his observations in the table below.

Observations	Animal X	Animal Y
It has four stages in its life cycle.	Yes	No
The young resembles the adult.	No	No
The eggs are laid in water.	Yes	Yes
The young moults several times.	Yes	No

Which one of the following correctly represents animals X and Y?

	Animal X	Animal Y
(1)	butterfly	chicken
(2)	mosquito	frog
(3)	cockroach	butterfly
(4)	beetle	grasshopper

- A) 1
 ✓ B) 2
 C) 3
 D) 4

Question Type: Multiple Choice
Randomize Answers: No
Date Added: Fri 15th Jan 2021
Last Modified: N/A
QID#: 25,890,126

[Answers](#) | [Edit](#) | [Duplicate](#) | [Used In](#) | [Reorder](#)

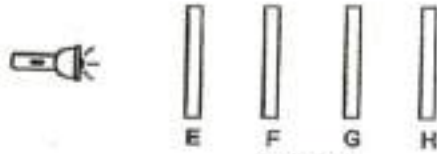
[Remove From Test](#)

Question 20

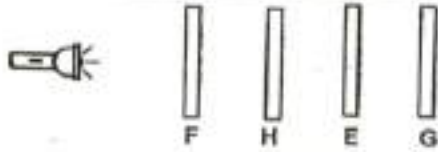
Primary 4 Science » Primary 4 Science (Term 4)

2 pts

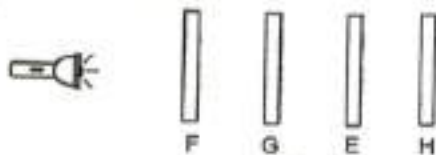
Elkan arranged four sheets, E, F, G and H, in a straight line as shown in set-ups 1, 2 and 3 below. The four sheets are of the same thickness and size, but they are made of different materials.



Set-up 1



Set-up 2



Set-up 3

He shone light of the same brightness at each set-up and recorded his observations in the table below.

Set-up	Observation
1	A bright patch of light was only seen on sheet E.
2	A bright patch of light was only seen on sheet H.
3	A dim patch of light was only seen on sheet E.

Based on Elkan's observations in the table above, which one of the following best represents the materials that were most likely used to make sheets E, F, G and H?

	Sheet E	Sheet F	Sheet G	Sheet H
(1)	aluminium	clear plastic	cardboard	tracing paper
(2)	clear plastic	cardboard	frosted glass	clear glass
(3)	cardboard	clear plastic	frosted glass	aluminium
(4)	tracing paper	frosted glass	cardboard	clear glass

- A) 1
 B) 2
 ✓ C) 3
 D) 4

Question Type: Multiple Choice
 Randomize Answers: No
 Date Added: Fri 15th Jan 2021
 Last Modified: N/A
 QID#: 25,890,130

[Answers](#) | [Edit](#) | [Duplicate](#) | [Used In](#) | [Reorder](#)

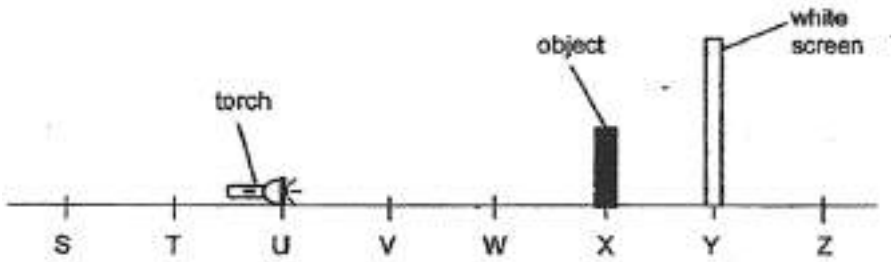
[Remove From Test](#)

Question 21

Primary 4 Science » Primary 4 Science (Term 4)

2 pts

Meredith set up a torch, object and screen at positions U, X and Y respectively, as shown in the diagram below.



She recorded the height of the shadow formed on the white screen when the torch was switched on.

Which of the following positions could she use so that the shadow formed on the screen would be larger?

	position of torch	position of object	position of white screen
A	V	Y	Z
B	T	V	W
C	S	V	X
D	W	X	Y

- A) A and C only
 B) B and D only
 C) A, B and C only
 ✓ D) B, C and D only

Question Type: Multiple Choice
Randomize Answers: No
Date Added: Fri 15th Jan 2021
Last Modified: N/A
QID#: 25,890,135

[Answers](#) | [Edit](#) | [Duplicate](#) | [Used In](#) | [Reorder](#)

[Remove From Test](#)

Question 22

Primary 4 Science » Primary 4 Science (Term 4)

2 pts

Wei Shen placed his right hand into the water in basin E and his left hand into the water in basin G at the same time.

After 30 seconds, he placed both his hand into the water in basin F. His right hand felt cool but left hand felt warm.



Which one of the following shows the possible temperatures of the water in the three basins, E, F and G?

Temperature of water (°C)		
Basin E	Basin F	Basin G
(1) 12	24	45
(2) 24	12	45
(3) 45	24	12
(4) 12	45	24

- A) 1
 B) 2
 ✓ C) 3
 D) 4

Question Type: Multiple Choice
Randomize Answers: No
Date Added: Fri 15th Jan 2021
Last Modified: N/A
QID#: 25,890,139

[Answers](#) | [Edit](#) | [Duplicate](#) | [Used In](#) | [Reorder](#)

[Remove From Test](#)

Question 23

Primary 4 Science » Primary 4 Science (Term 4)

2 pts

In his kitchen, at room temperature, Eugene placed a metal spoon into his cup of hot coffee as shown in the diagram below.



Which of the following correctly represents the flow of heat?

	Heat flowed from	Heat flowed to
A	hot coffee	metal spoon
B	surrounding air	hot coffee
C	hot coffee	surrounding air
D	metal spoon	hot coffee

- A) A and B only
 B) A and C only
 C) B and D only
 D) C and D only

Question Type: Multiple Choice
 Randomize Answers: No
 Date Added: Fri 15th Jan 2021
 Last Modified: N/A
 QID#: 25,890,145

[Answers](#) | [Edit](#) | [Duplicate](#) | [Used In](#) | [Reorder](#)

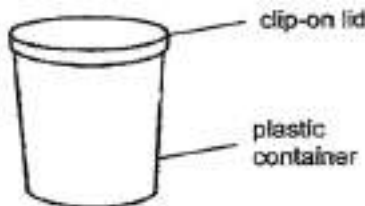
[Remove From Test](#)

Question 24

Primary 4 Science » Primary 4 Science (Term 4)

2 pts

Mei Lin has a 600 cm^3 plastic container with a clip-on lid as shown in the diagram below.



Which of the following matter can be totally placed into the plastic container and still allow Mei Lin to clip the lid on?

- A) Pour in 550 cm^3 of milk
 B) Pump in 700 cm^3 of oxygen
 C) Put in 6 wooden balls each with a volume of 100 cm^3
 D) A, B and C

Question Type: Multiple Choice
Randomize Answers: No
Date Added: Fri 15th Jan 2021
Last Modified: N/A
QID#: 25,890,152

[Answers](#) | [Edit](#) | [Duplicate](#) | [Used In](#) | [Reorder](#)

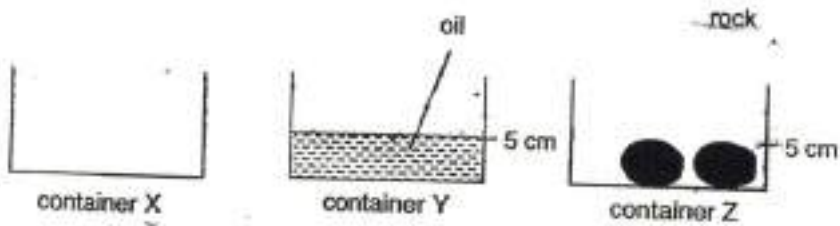
[Remove From Test](#)

Question 25

Primary 4 Science » Primary 4 Science (Term 4)

2 pts

1. Colin set up three identical containers, X, Y and Z, as shown below.



He then used containers X, Y and Z to collect water from the same tap.

Which one of the following correctly shows the time taken for the containers to be filled to the brim with water?

Time taken for the containers to be filled to the brim with water	
shortest → longest	
(1)	X, Y, Z
(2)	Y, Z, X
(3)	Z, X, Y
(4)	Z, Y, X

- A) 1
 ✓ B) 2
 C) 3
 D) 4

Question Type: Multiple Choice
Randomize Answers: No
Date Added: Fri 15th Jan 2021
Last Modified: N/A
QID#: 25,890,157

[Answers](#) | [Edit](#) | [Duplicate](#) | [Used In](#) | [Reorder](#)

[Remove From Test](#)

Question 26

Primary 4 Science » Primary 4 Science (Term 4)

2 pts

Li Ting put her belongings in her handbag, closed it tight and went out. When it rained, she observed that all her belongings in her handbag were soaked with water.

Which of the following materials was her handbag most likely made of?

- A) steel
- ✓ B) cotton
- C) plastic
- D) rubber

Question Type: Multiple Choice
Randomize Answers: No
Date Added: Fri 15th Jan 2021
Last Modified: N/A
QID#: 25,890,166

[Answers](#) | [Edit](#) | [Duplicate](#) | [Used In](#) | [Reorder](#)

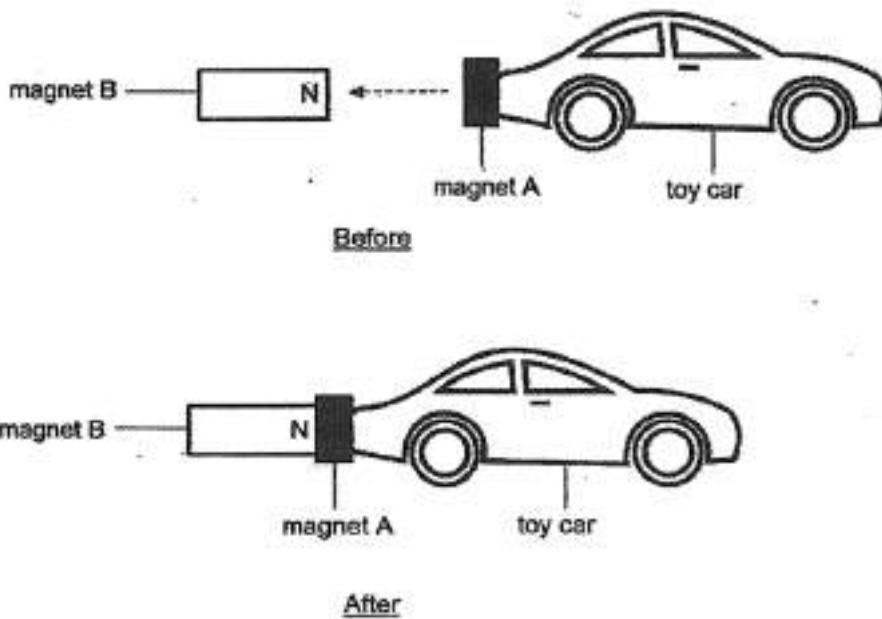
[Remove From Test](#)

Question 27

Primary 4 Science » Primary 4 Science (Term 4)

2 pts

Marcus glued magnet A behind his toy car and held magnet B near it. He observed that the toy car moved backwards and was attracted to magnet B as shown below.



Which one of the following should Marcus do in order to make his toy car move forward?

- A) Replace magnet B with a steel bar
- ✓ B) Flip magnet B and hold it near magnet A
- C) Move magnet B further away from magnet A
- D) Stroke magnet B with an iron nail many times

Question Type: Multiple Choice
Randomize Answers: No
Date Added: Fri 15th Jan 2021
Last Modified: N/A
QID#: 25,890,180

[Answers](#) |
 [Edit](#) |
 [Duplicate](#) |
 [Used In](#) |
 [Reorder](#)

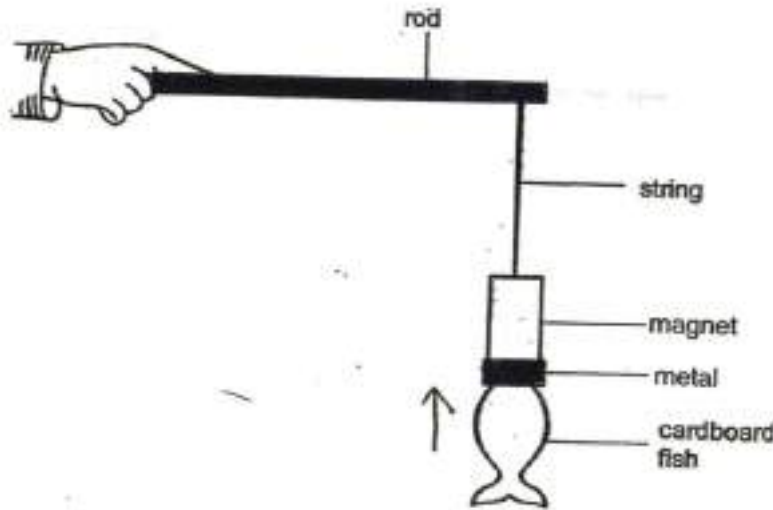
[Remove From Test](#)

Question 28

Primary 4 Science » Primary 4 Science (Term 4)

2 pts

Farah attached a piece of metal to a cardboard fish. She then held a rod with a magnet attached to it above the cardboard fish. She made the following observation as shown below.



Which one of the following materials is most likely used to make the metal attached to the cardboard fish?

- ✓ A) Iron
- B) Gold
- C) Copper
- D) Aluminium

Question Type: Multiple Choice
Randomize Answers: No
Date Added: Fri 15th Jan 2021
Last Modified: N/A
QID#: 25,890,185

[Answers](#) |
 [Edit](#) |
 [Duplicate](#) |
 [Used In](#) |
 [Reorder](#)

[Remove From Test](#)

Question 29

Primary 4 Science » Primary 4 Science (Term 4)

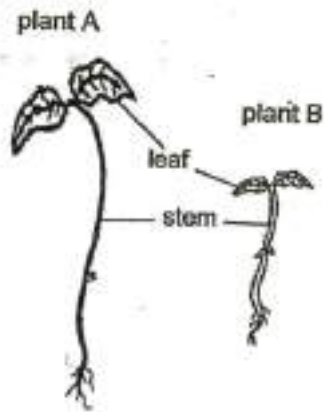
2 pts

Booklet B

This section is designed for extended answers that parent/ teacher will have to assign and guide child to attempt after the test has been completed.

Grading: This question type is not graded on this system and will not affect the final score as it was designed in such a way that it requires manual assistance.

The diagram below shows two plants.



- (a) What is one difference between the leaves of plant A and the stem of plant B?

The leaves of plant A is _____ than the leaves of plant B. [1]

- (b) The _____ help both plants to keep themselves upright. [1]

Accepted answers:

- ✓ bigger, stems
- ✓ bigger, stems
- ✓ bigger stems
- ✓ bigger ,stems
- ✓ bigger , stems

Question Type: Free Text
 Date Added: Fri 15th Jan 2021
 Last Modified: N/A
 QID#: 25,890,412

[Answers](#) | [Edit](#) | [Duplicate](#) | [Used In](#) | [Reorder](#)

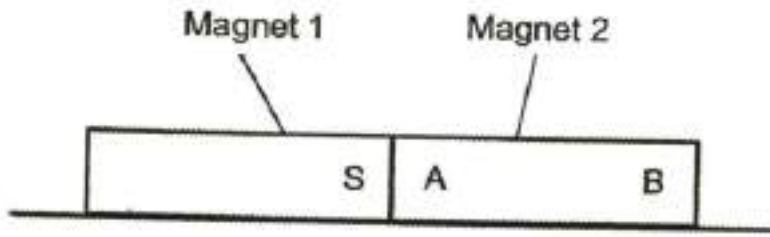
[Remove From Test](#)

Question 30

Primary 4 Science » Primary 4 Science (Term 4)

1 pt

Two magnets are placed together as shown below.



The south pole of magnet 1 is labelled S.

Identify the poles labelled A and B on magnet 2.

A: _____

Accepted answers:

✓ North

Question Type: Free Text
 Date Added: Fri 15th Jan 2021
 Last Modified: N/A
 QID#: 25,890,417

[Answers](#) | [Edit](#) | [Duplicate](#) | [Used In](#) | [Reorder](#)

[Remove From Test](#)

Question 31

Primary 4 Science » Primary 4 Science (Term 4)

1 pt

B: _____

Accepted answers:

✓ South

Question Type: Free Text
 Date Added: Fri 15th Jan 2021
 Last Modified: N/A
 QID#: 25,890,419

[Answers](#) | [Edit](#) | [Duplicate](#) | [Used In](#) | [Reorder](#)

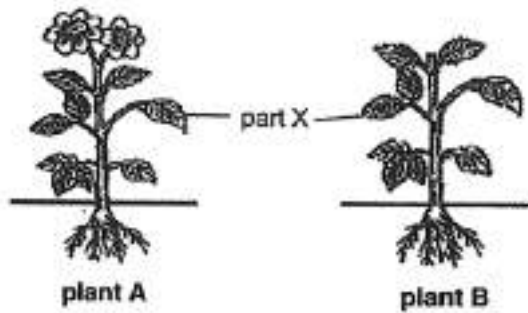
[Remove From Test](#)

Question 32

Primary 4 Science » Primary 4 Science (Term 4)

0 pts

Study the diagrams below carefully.



State one function of part X

Question Type: Essay
Date Added: Fri 15th Jan 2021
Last Modified: Fri 15th Jan 2021
QID#: 25,890,433

Correctly answered feedback

Plant X makes food for the plant

Incorrectly answered feedback

Plant X makes food for the plant

[Answers](#) | [Edit](#) | [Duplicate](#) | [Used In](#) | [Reorder](#)

[Remove From Test](#)

Question 33

Primary 4 Science » Primary 4 Science (Term 4)

0 pts

Study the list of plants below. Classify all the plants in the table below and give a suitable heading for the table. [2]

sunflower plant	mango tree	bird's nest fern	moss
(c)(i)			
(c)(ii)			

Question Type: Essay
Date Added: Fri 15th Jan 2021
Last Modified: N/A
QID#: 25,890,488

Correctly answered feedback

Flowering > Non-flowering

) Sunflower plant, mango tree > Bird's nest fern, Moss

Incorrectly answered feedback

Flowering > Non-flowering

) Sunflower plant, mango tree > Bird's nest fern, Moss

[Answers](#) | [Edit](#) | [Duplicate](#) | [Used In](#) | [Reorder](#)

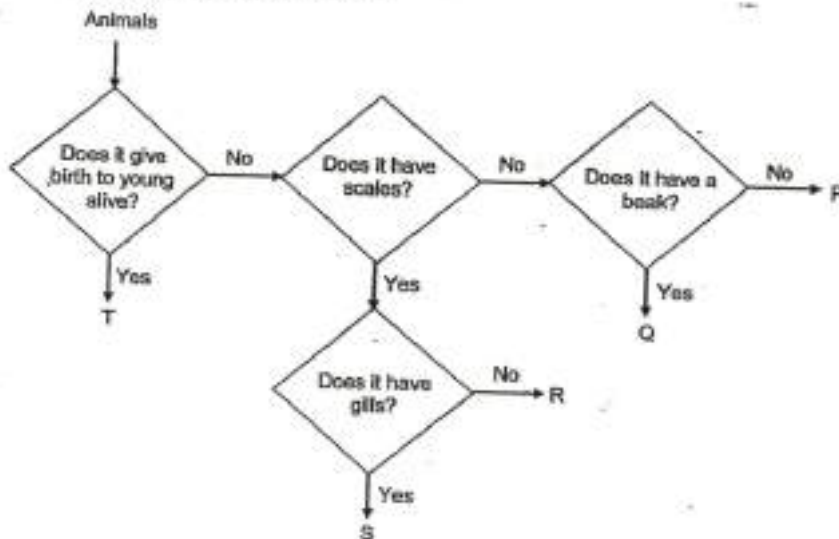
[Remove From Test](#)

Question 34

Primary 4 Science » Primary 4 Science (Term 4)

0 pts

Study the flowchart below carefully.



(a) Based on the flowchart above, state all the characteristics of animal S. [1]

Question Type: Essay

Date Added: Fri 15th Jan 2021

Last Modified: N/A

QID#: 25,890,496

Correctly answered feedback

Animal S does not give birth to young alive, has scales and has gills

Incorrectly answered feedback

Animal S does not give birth to young alive, has scales and has gills

[Answers](#) | [Edit](#) | [Duplicate](#) | [Used In](#) | [Reorder](#)

[Remove From Test](#)

Question 35

Primary 4 Science » Primary 4 Science (Term 4)

0 pts

Based on the flowchart above, state one difference between animal P and animal Q

Question Type: Essay
Date Added: Fri 15th Jan 2021
Last Modified: N/A
QID#: 25,890,506

Correctly answered feedback

Animal Q has a beak but animal P does not have a beak

Incorrectly answered feedback

Animal Q has a beak but animal P does not have a beak

[Answers](#) | [Edit](#) | [Duplicate](#) | [Used In](#) | [Reorder](#)

[Remove From Test](#)

Question 36

Primary 4 Science » Primary 4 Science (Term 4)

1 pt

Based on the flow chart above, which animal group does animal R most likely belong to?

Accepted answers:

✓ reptile

Question Type: Free Text
Date Added: Fri 15th Jan 2021
Last Modified: N/A
QID#: 25,890,517

[Answers](#) | [Edit](#) | [Duplicate](#) | [Used In](#) | [Reorder](#)

[Remove From Test](#)

Question 37

Primary 4 Science » Primary 4 Science (Term 4)

1 pt

Based on the flow chart above, state an example of animal T.

Accepted answers:

✓ dog

Question Type: Free Text
Date Added: Fri 15th Jan 2021
Last Modified: N/A
QID#: 25,890,521

[Answers](#) | [Edit](#) | [Duplicate](#) | [Used In](#) | [Reorder](#)

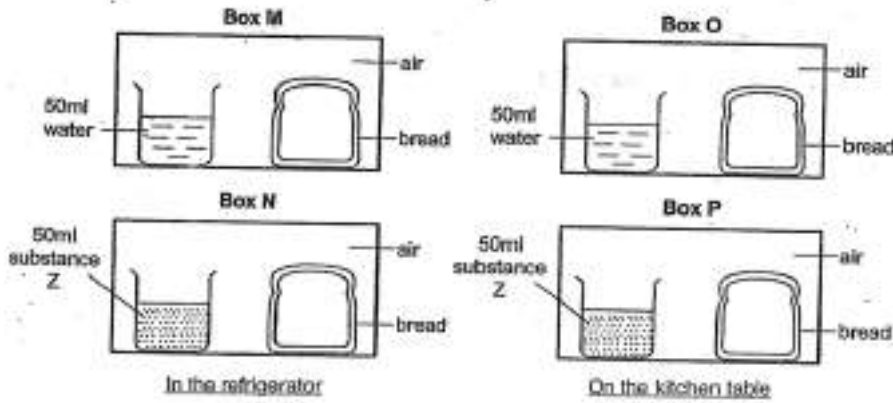
[Remove From Test](#)

Question 38

Primary 4 Science » Primary 4 Science (Term 4)

0 pts

Michel conducted an experiment using identical slices of bread as shown below. He placed boxes M and N in the refrigerator and boxes O and P on the kitchen table. Substance Z absorbs water from the surrounding.



(a) In which box, M, N, O or P, would appear on the bread first?
Explain your answer.

[2]

Question Type: Essay
Date Added: Fri 15th Jan 2021
Last Modified: N/A
QID#: 25,890,528

Correctly answered feedback

Box O. There is water and warmth in the box

Incorrectly answered feedback

Box O. There is water and warmth in the box

Answers | Edit | Duplicate | Used In | Reorder

Remove From Test

Question 39

Primary 4 Science » Primary 4 Science (Term 4)

1 pt

Which group of living things does mould belong to?

Accepted answers:

✓ fungi

Question Type: Free Text
Date Added: Fri 15th Jan 2021
Last Modified: N/A
QID#: 25,890,531

Answers | Edit | Duplicate | Used In | Reorder

Remove From Test

Question 40

Primary 4 Science » Primary 4 Science (Term 4)

0 pts

State how mould obtains food for growth

Question Type: Essay
Date Added: Fri 15th Jan 2021
Last Modified: N/A
QID#: 25,890,538

Correctly answered feedback

Mould obtains food from other living things, dead or alive.

Incorrectly answered feedback

Mould obtains food from other living things, dead or alive.

[Answers](#) | [Edit](#) | [Duplicate](#) | [Used In](#) | [Reorder](#)

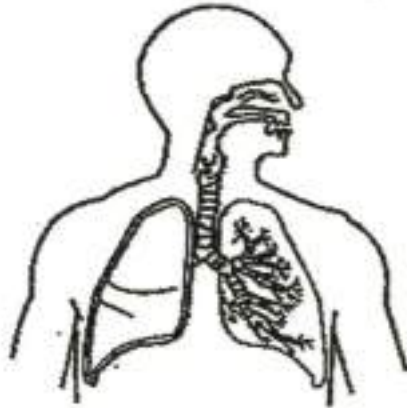
[Remove From Test](#)

Question 41

Primary 4 Science » Primary 4 Science (Term 4)

1 pt

The diagram below shows a human organ system.



(a)(i) Identify the human organ system shown above.

Accepted answers:

✓ respiratory system

Question Type: Free Text
Date Added: Fri 15th Jan 2021
Last Modified: N/A
QID#: 25,890,543

[Answers](#) | [Edit](#) | [Duplicate](#) | [Used In](#) | [Reorder](#)

[Remove From Test](#)

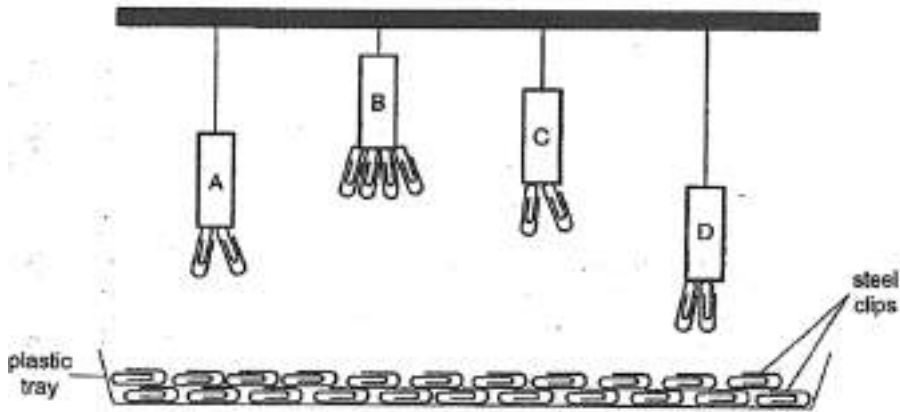
Question 42

Primary 4 Science » Primary 4 Science (Term 4)

1 pt

Match the options below:

Tiffany hung four magnets, A, B, C and D, above a plastic tray of identical steel clips. The diagram below shows her observation.



(a) Based on her observation, arrange the magnets in the order of their magnetic strength, beginning with the strongest magnet. [1]

Clue	Match
strongest	B
strong	C
weak	A
weakest	D

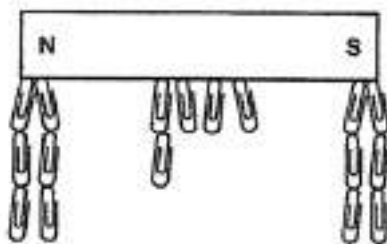
Question Type: Matching
 Grade style: Full points if all answers are correct
 Shuffle Mode: Shuffle Matches Only
 Date Added: Fri 15th Jan 2021
 Last Modified: N/A
 QID#: 25,890,552

[Answers](#) |
 [Edit](#) |
 [Duplicate](#) |
 [Used In](#) |
 [Reorder](#)
[Remove From Test](#)

Question 43

Primary 4 Science » Primary 4 Science (Term 4) 0 pts

Tiffany then placed magnet E into the plastic tray of steel clips and made the following observation.



(b) Give a reason why there were most steel clips attracted to the poles of the magnet. [1]

Question Type: Essay

Date Added: Fri 15th Jan 2021
 Last Modified: N/A
 QID#: 25,890,558

Correctly answered feedback

The magnet is strongest at its poles

Incorrectly answered feedback

The magnet is strongest at its poles

[Answers](#) | [Edit](#) | [Duplicate](#) | [Used In](#) | [Reorder](#)

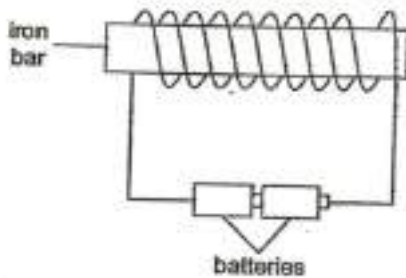
[Remove From Test](#)

Question 44

Primary 4 Science » Primary 4 Science (Term 4)

0 pts

Tiffany then set up another experiment with an iron bar as shown below.



She then hung the iron bar above the same plastic tray of identical steel clips. She repeated the experiment with different number of coils of wire around the iron bar and recorded her results as shown in the table below.

Number of coils of wire around the iron bar	Number of steel clips attracted by the iron bar
10	3
15	6
20	12
25	18

- (c)(i) Based on the results above, state the relationship between the number of coils of wire around the iron bar and the number of steel clips attracted by the iron bar [1]

Question Type: Essay
 Date Added: Fri 15th Jan 2021
 Last Modified: N/A
 QID#: 25,890,568

Correctly answered feedback

As the number of coils of wire around the iron bar increases, the number of steel clips attracted by the iron bar increases.

Incorrectly answered feedback

As the number of coils of wire around the iron bar increases, the number of steel clips attracted by the iron bar increases.

[Answers](#) | [Edit](#) | [Duplicate](#) | [Used In](#) | [Reorder](#)

[Remove From Test](#)

Question 45

Primary 4 Science » Primary 4 Science (Term 4)

0 pts

Besides increasing the number of coils of wire around the iron bar, suggest another way for the electromagnet to attract more than 18 steel clips.

Question Type: Essay
Date Added: Fri 15th Jan 2021
Last Modified: N/A
QID#: 25,890,577

Correctly answered feedback

Use more batteries

Incorrectly answered feedback

Use more batteries

[Answers](#) | [Edit](#) | [Duplicate](#) | [Used In](#) | [Reorder](#)

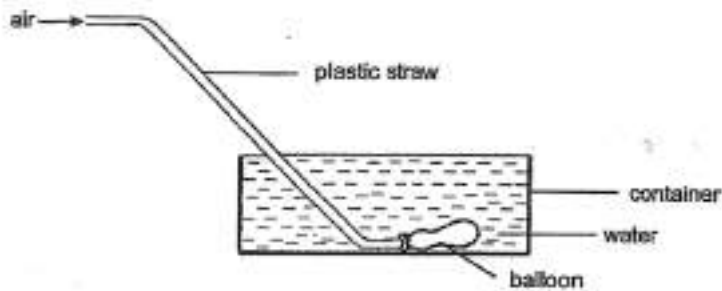
[Remove From Test](#)

Question 46

Primary 4 Science » Primary 4 Science (Term 4)

0 pts

40. Timothy set up an experiment as shown in the diagram below. He filled the container to the brim with water. Then, he blew air through the plastic straw.



(a)(i) What would happen to the water in the container when the balloon is inflated? [1]

Question Type: Essay
Date Added: Fri 15th Jan 2021
Last Modified: N/A
QID#: 25,890,583

Correctly answered feedback

The water will flow out of the container

Incorrectly answered feedback

The water will flow out of the container

[Answers](#) | [Edit](#) | [Duplicate](#) | [Used In](#) | [Reorder](#)

[Remove From Test](#)

Question 47

Primary 4 Science » Primary 4 Science (Term 4)

0 pts

Explain your answer in (a)

Question Type: Essay

Date Added: Fri 15th Jan 2021
 Last Modified: N/A
 QID#: 25,890,588

Correctly answered feedback

the air in the balloon occupies space

Incorrectly answered feedback

the air in the balloon occupies space

[Answers](#) | [Edit](#) | [Duplicate](#) | [Used In](#) | [Reorder](#)

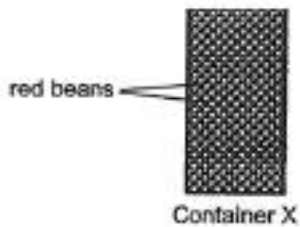
[Remove From Test](#)

Question 48

Primary 4 Science » Primary 4 Science (Term 4)

0 pts

In another experiment, Timothy filled container X, which has a volume of 250cm^3 , to the brim with red beans as shown in the diagram below.



Timothy's teacher told him that the volume of red beans in container X was actually less than 250cm^3 .

(b) Explain why the volume of the red beans was less than 250cm^3 . [1]

Question Type: Essay
 Date Added: Fri 15th Jan 2021
 Last Modified: N/A
 QID#: 25,890,592

Correctly answered feedback

There are air spaces between the red beans

Incorrectly answered feedback

There are air spaces between the red beans

[Answers](#) | [Edit](#) | [Duplicate](#) | [Used In](#) | [Reorder](#)

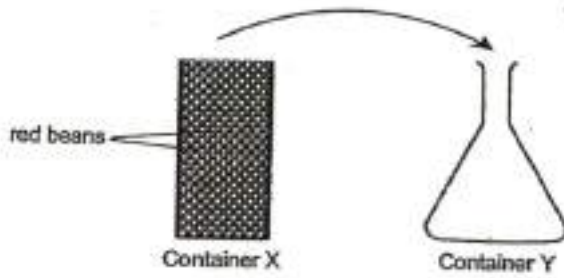
[Remove From Test](#)

Question 49

Primary 4 Science » Primary 4 Science (Term 4)

0 pts

- C. Timothy then poured the red beans from container X into container Y as shown in the diagram below.



Timothy observed that the red beans took the shape of container Y. He concluded that red beans are in the liquid state.

Using the properties of matter, explain why Timothy's conclusion is wrong. [1]

Question Type: Essay
Date Added: Fri 15th Jan 2021
Last Modified: N/A
QID#: 25,890,595

Correctly answered feedback

Red beans have definite shape

Incorrectly answered feedback

Red beans have definite shape

[Answers](#) | [Edit](#) | [Duplicate](#) | [Used In](#) | [Reorder](#)

[Remove From Test](#)